



Rush



INTERIOR



COMBINATION METERS

The instrument panel integrates speedometer and tachometer meters accented by elegant chrome-plated rings. Three-dimensional scales enhance visibility to provide vital driving information at a glance. The multi-information display in the center of the meters displays fuel efficiency in an intuitive format, together with an eco-bar indicator.



SMART ENTRY & START SYSTEM

When carrying the Electronic Key, all doors can be unlocked by simply pressing the switch in the door handle, and the car started by depressing the brake pedal and pushing the engine switch. Pushing the switch again stops the engine.



AIR-CONDITIONING SYSTEM

The excellent heating and cooling performance of the auto air-conditioning with rear cooler keeps the interior at a comfortable temperature, for enjoyable driving comfort whether it is hot or cold outside.



STORAGE SPACE

The ample luggage space has room for four 5-gallon water bottles (approx 20 liters each), even when all seats are occupied. The array of easy-to-use storage spaces includes 13 bottle holders, a glove compartment large enough for a box of tissues, and a wide tray that holds two smartphones side by side.

SAFETY



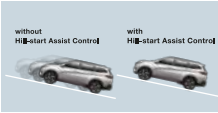
LED HEADLAMPS

Ensure excellent visibility at night and in low light while helping save power.



BACK-UP SONAR

While backing out of a car park or garage, ultrasonic sensors detect obstacles as the vehicle approaches them and alerts the driver with a buzzer.



HAC - HILL START ASSIST CONTROL

Helps to prevent the vehicle from rolling backward, for example when starting on a steep incline.



VSC - VEHICLE STABILITY CONTROL

When sensors detect conditions likely to cause skidding, it helps prevent front or rear wheel slip by optimally controlling engine power and braking force.

POWER AND VERSATILITY

VERSATILE SEATING FOR 7

The three rows of seats all comfortably accommodate occupants, or configure to carry a variety of loads. For example, the second-row and third-row seatbacks fold down to create a large space for carrying long items, or the third-row seatbacks tumble-fold to expand the luggage space. The driver's seat is spacious too, enhancing comfort on long drives.

MANEUVERABILITY

The 5.2-meter minimum turning radius makes for easy driving and peace of mind in narrow parking spaces and alleyways.

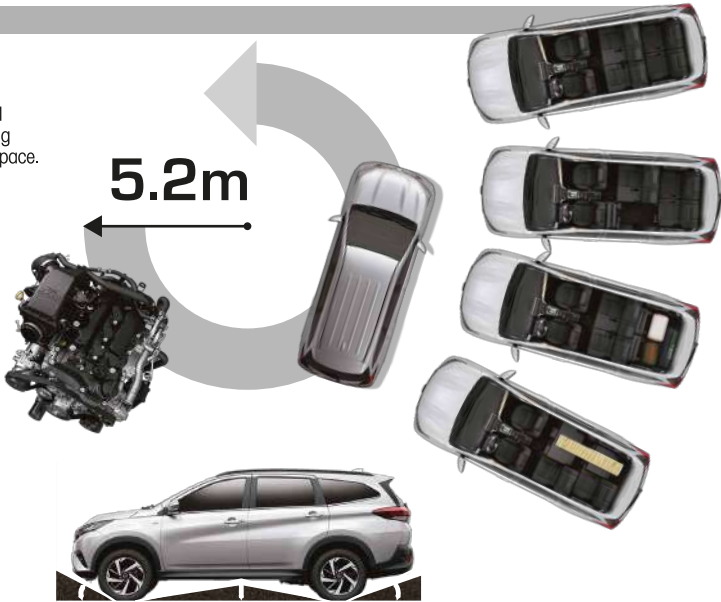
2NR-VE ENGINE

Incorporates Dual VVT-i (Variable Valve Timing with Intelligence), which continuously optimizes intake and exhaust valve timing in response to driving conditions to deliver excellent performance in various conditions, together with light weight and low friction components that contribute to high combustion and outstanding fuel efficiency.

ALL-TERRAIN CAPABILITY

Designed to traverse rough roads, the high approach and departure angles enable the Rush to navigate a variety of terrains

1. Approach angle: 31.0°
2. Ground clearance: 220mm
3. Departure angle: 26.5°



ALLOY WHEEL



17 inch 6.5J
(HIGH grade)

16 inch 6.5
(MID grade)

ACCESSORY SOCKETS



Each row of seats has an accessory socket for convenient charging of smartphones and other devices.

AIRBAGS



Equipped with SRS driver airbag, SRS front passenger airbag, SRS side airbags (front seats) and SRS curtain shield airbags (front and rear seats).

EXTERIOR COLORS



Silver Mica Metallic <1E7>



Dark Red Mica Metallic <3Q3>



Dark Red Mica <R54>



White <W09>

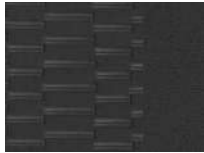


Bronze Mica Metallic <4T3>



Black Metallic <X12>

INTERIOR COLORS



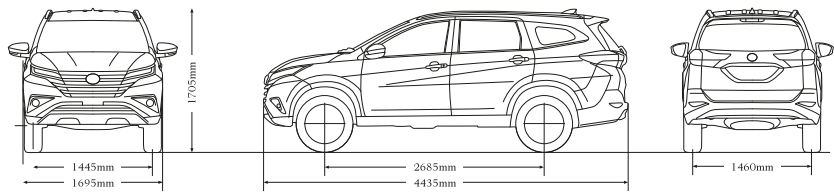
Black (HIGH grade)



Black (MID grade)

SPECIFICATIONS		16V 1.5-liter (2NR-VE)	
		HIGH	MID
Transmission		4-speed automatic, 5-speed manual	
DIMENSIONS & WEIGHT			
Overall length	mm	4435	
Overall width	mm	1695	
Overall height	mm	1705	
Wheelbase	mm	2685	
Tread	Front/Rear	mm	1445/1460
Ground clearance	mm	220	
Interior length X width X height	mm	2490 X 1415 X 1195	
Curb weight	kg	1280*1, 1290*2	
Gross vehicle weight	kg	1870	
CHASSIS			
Suspension		MacPherson struts (Coil springs, with a stabilizer bar)	
Front/Rear		/ 5-link (Coil springs, with a stabilizer bar)	
Brakes		Ventilated discs/drum	
Front/Rear			
Minimum turning radius (Tires)	m	5,2	
Fuel tank capacity	liters	45	
Tires		215/60R17	215/65R16
ENGINE			
16V 1.5-liter (2NR-VE)			
Type		4-cyl. in-line 16-Valve DOHC, chain drive with Dual VVT-i*3	
Piston displacement	cc	1496	
Max. output (EEC net)	HP/rpm	77/6000	
Max. torque (EEC net)	kg-m/rpm	136/4200	
Fuel system		Port Injection	

*1 5-speed manual transmission *2 4-speed automatic transmission *3 VVT-i: Variable Valve Timing-intelligent.
• Addition of extra features may change figures in this chart. • Toyota Motor Corporation reserves the right to alter any details of specifications and equipment without notice. Details of specifications and equipment are also subject to change to suit local conditions and requirements. Please inquire at your local dealer for details of any such changes that might be required for your area. • Vehicle body color might differ slightly from the printed photos in this catalog.



Note: Vehicles pictured and specifications detailed in this catalog may vary from models and equipment available in your area. Please inquire at your local dealer for details on the availability of features.